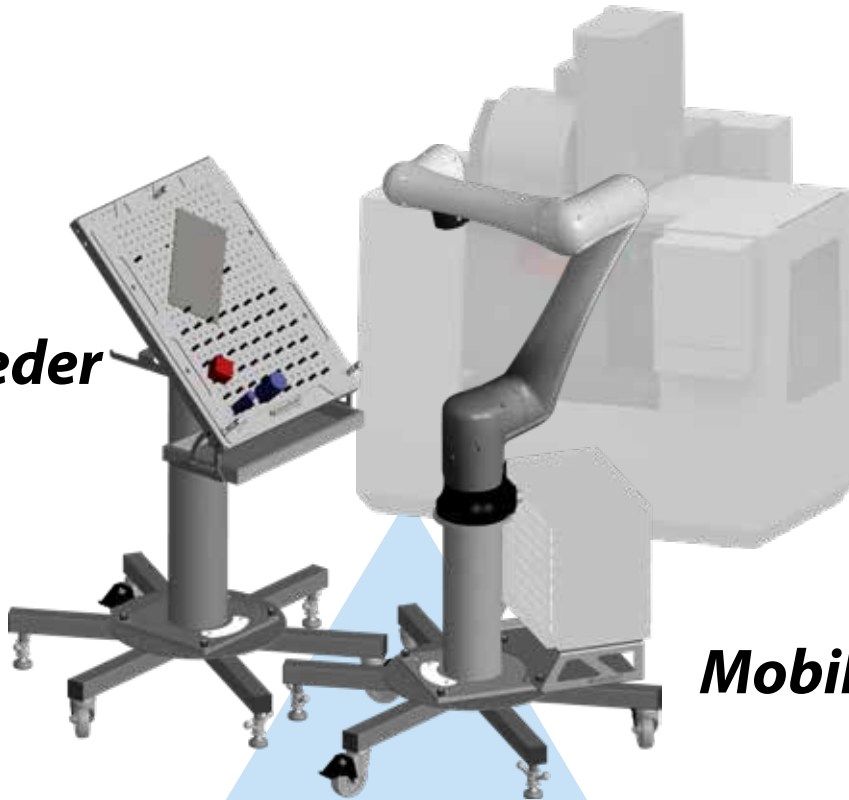


# COBOT Accessories

Parts Feeder - Pedestals - Mobile Cart - Mobile Base

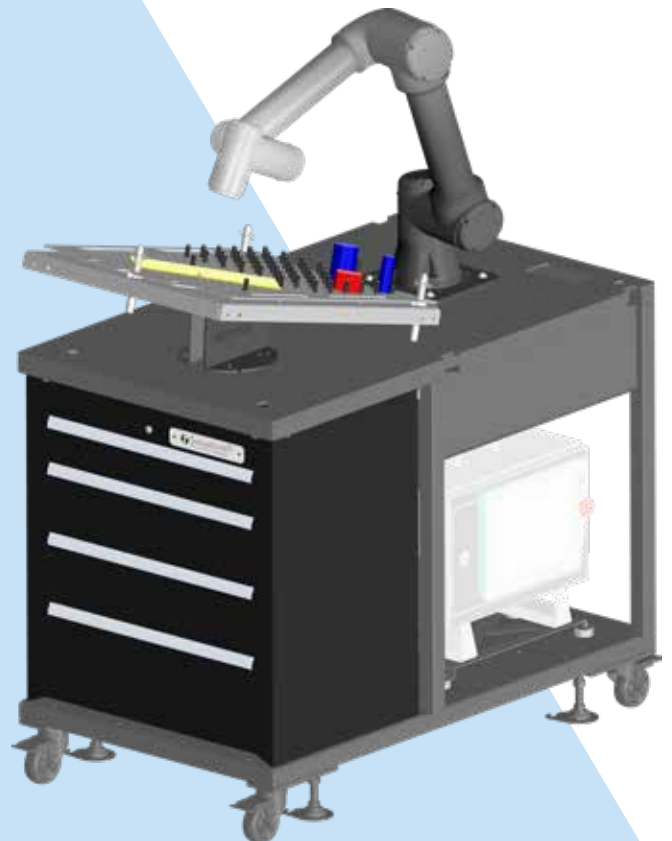
***Parts Feeder***



***Mobile Base***



***Pedestals***



***Mobile Cart***

# COBOT Parts Feeder



## 45° Parts Feeder Kit

Includes:

- ✓ Parts platform
- ✓ 45° base adapter
- ✓ Template storage rack
- ✓ Catch pan & brackets
- ✓ COBOT pedestal



**RB-PPS-12CB200-45KIT** - Kit with 12" COBOT Pedestal

**RB-PPS-18CB200-45KIT** - Kit with 18" COBOT Pedestal

**RB-PPS-24CB200-45KIT** - Kit with 24" COBOT Pedestal

**RB-PPS-30CB200-45KIT** - Kit with 30" COBOT Pedestal

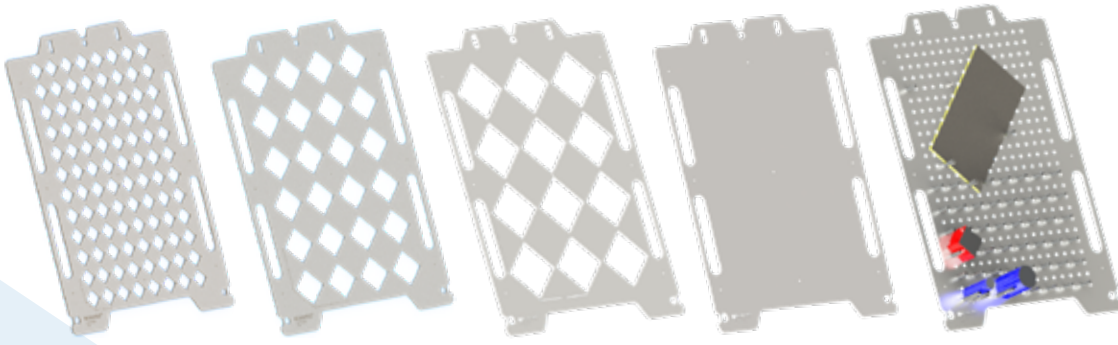
**RB-PPS-36CB200-45KIT** - Kit with 36" COBOT Pedestal

**RB-PPS-42CB200-45KIT** - Kit with 42" COBOT Pedestal

**RB-PPS-48CB200-45KIT** - Kit with 48" COBOT Pedestal

# COBOT Parts Feeder Add-ons

## Parts Feeder Templates



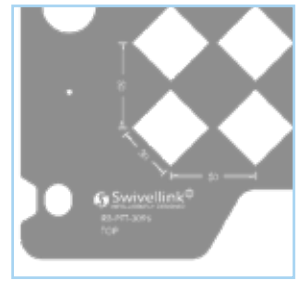
**RB-PFT-3096**  
30mm spacing  
holds 96 parts

**RB-PFT-6024**  
60mm spacing  
holds 24 parts

**RB-PFT-9012**  
90mm spacing  
holds 12 parts

**RB-PFT-BLANK**  
Design your own  
or use as spacer

**RB-PFT-PB25**  
Adjustable pegboard



Center-to-center spacing cut  
into templates

- ✓ Heavy-duty stainless-steel
- ✓ Set up information cut into template
- ✓ Robot calibration touch off indicators

- ✓ Diamond patterns settle parts into V for precise location
- ✓ Stackable templates to support taller material blanks
- ✓ Precision location to parts feeder base locater pins

**Stackable Pins**  
for use with RB-PFT-PB25



**RB-PFT-PEG25**

## Other Accessories

### Catch Pan



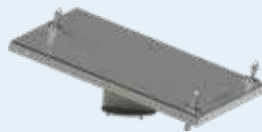
**RB-PFT-CATCHPAN-KIT**

- Heavy-duty stainless-steel brackets
- Mounting hardware included
- Stain resistant plastic tray
- 1 gallon capacity
- Easy load and removal

### Parts Feeder Platforms

- Heavy-duty stainless-steel
- Mounting hardware included

**15°**



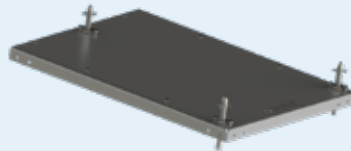
**RB-PFT-15BASE-KIT**

**45°**



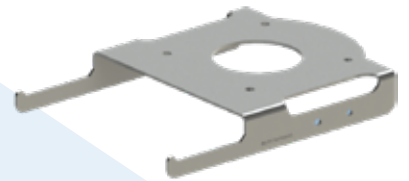
**RB-PFT-45BASE-KIT**

**Flat**

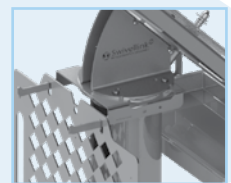


**RB-PFT-BASE-KIT**

### Storage Rack for Templates



**RB-PFT-TMPHANG**



## Mobile Base



Mobile Base shown with  
COBOT pedestal and anchor,  
both sold separately



**RB-MB-COBOT**



**RB-MB-ANCHOR**  
(sold separately)

# COBOT Pedestals

height measurement = base to base



**RB-PED-12-CB200** - 12" COBOT Pedestal

**RB-PED-18-CB200** - 18" COBOT Pedestal

**RB-PED-24-CB200** - 24" COBOT Pedestal

**RB-PED-30-CB200** - 30" COBOT Pedestal

**RB-PED-36-CB200** - 36" COBOT Pedestal

**RB-PED-42-CB200** - 42" COBOT Pedestal

**RB-PED-48-CB200** - 48" COBOT Pedestal



- ✓ CB200 series mounts the UR3, UR3e, UR5, UR5e, UR10, UR10e, UR16, UR16e, FANUC CRX-10iA, CRX-10iA/L, Omron TM5, TM12, TM14
- ✓ Designed with a thru-hole for routing cables, providing a nice clean look
- ✓ Holes for leveling and anchoring
- ✓ RAL7010 Powder Coat Finish
- ✓ Welded Construction

## Other Accessories



**RB-MB-COBOT**

### Mobile Base

- ✓ Heavy duty welded steel construction
- ✓ Standard gray powder coated finish
- ✓ Total locking swivel and wheel brakes
- ✓ Industrial swivel leveling feet for stability
- ✓ Non-slip pads on each leveling foot
- ✓ Accommodates all Swivellink COBOT pedestals
- ✓ Mounting hardware included
- ✓ Large footprint for stability
- ✓ Base can be locked in 30° increments



*COBOT pedestal shown with Mobile Base, sold separately*



**RB-MB-ANCHOR**  
*(sold separately)*

### Controller Bracket



**RB-MB-CNTRLR-BKT**

### 45° Base Adapter



**RB-45ADAPTER-CB200**

### 15° Base Adapter



**RB-15ADAPTER-CB200**

# COBOT Mobile Cart



**RB-MTC-CB300**



**RB-MTC-CB300-15KIT**  
*Includes RB-PFT-15BASE-KIT*

## Both carts include:

- ✓ Table weldment with top plate/COBOT adapter plate
- ✓ 4 casters
- ✓ 4 leveling feet
- ✓ Same hole pattern as CB200 Series COBOT pedestal

## Other Accessories

### Wings

Fold-down wing  
for left side  
**RB-MTC-LEFTWING**



Fold-down wing  
for right side  
**RB-MTC-RIGHTWING**

### Toolbox



**RB-MTC-TOOLBOX**

### Caster



**RB-MTC-CASTER1**

### Leveling Foot



**RB-MTC-FOOT**

### 15° Base Kit



**RB-PFT-15BASE-KIT**

**Contact your Distributor  
for More Information**